

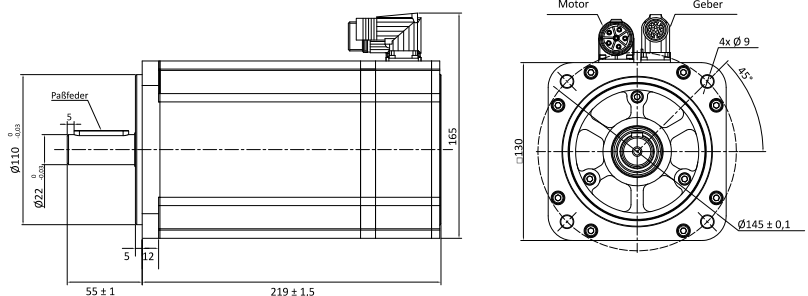
- Sehr gutes Preis-Leistungs-Verhältnis
- Kurze Lieferzeiten
- Kompakte Bauform
- Motor nach Isolierstoffklasse F
- Schutzart IP65
- Betriebsart S1
- Mit Bremse lieferbar
- Good price/performance ratio
- Short delivery times
- Compact design
- Motor insulation class F
- Protection IP65
- Operation mode S1
- Available with brake



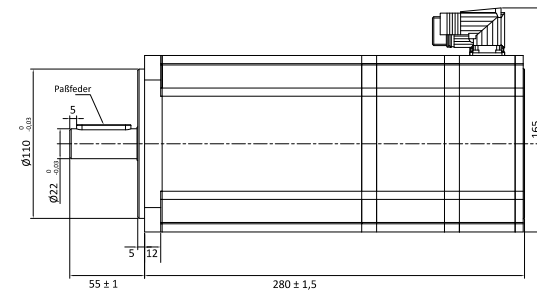
### Technische Daten / Data

| Technische Daten<br>Technical data                | Einheit<br>Unit         | Wert<br>Value |
|---|-------------------------|---------------|
| Nennmoment<br>Nominal torque                      | Nm                      | 14,3          |
| Nennleistung<br>Nominal power                     | kW                      | 3             |
| Nenn Drehzahl<br>Nominal speed                    | min <sup>-1</sup>       | 2000          |
| Zwischenkreisspannung<br>DC bus voltage           | V                       | 560           |
| Nennstrom<br>Nominal current                      | A                       | 10,8          |
| Dauerstillstandsmoment<br>Continuous stall torque | Nm                      | 15,7          |
| Dauerstillstandsstrom<br>Continuous stall current | A                       | 11,9          |
| Maximalmoment<br>Peak torque                      | Nm                      | 35,75         |
| Maximalstrom<br>Peak current                      | A                       | 27            |
| Spannungskonstante<br>Voltage constant            | V/1000min <sup>-1</sup> | 80            |
| Drehmomentkonstante<br>Torque constant            | Nm/A                    | 1,32          |
| Trägheitsmoment<br>Rotor moment of inertia        | kgcm <sup>2</sup>       | 29,1          |
| Wicklungswiderstand<br>Resistance line-line       | Ω                       | 0,66          |
| Wicklungsinduktivität<br>Inductance line-line     | mH                      | 9,8           |
| Pohlzahl<br>Pole number                           |                         | 8             |
| Isolationsklasse<br>Isolation class               |                         | F             |
| max. zul. Radialkraft<br>max radial force         | N                       | 900           |
| max. zul. Axialkraft<br>max. axial force          | N                       | 450           |
| Schutzklasse<br>protection Level                  |                         | IP65          |
| Gewicht<br>Weight                                 | kg                      | 12,3          |

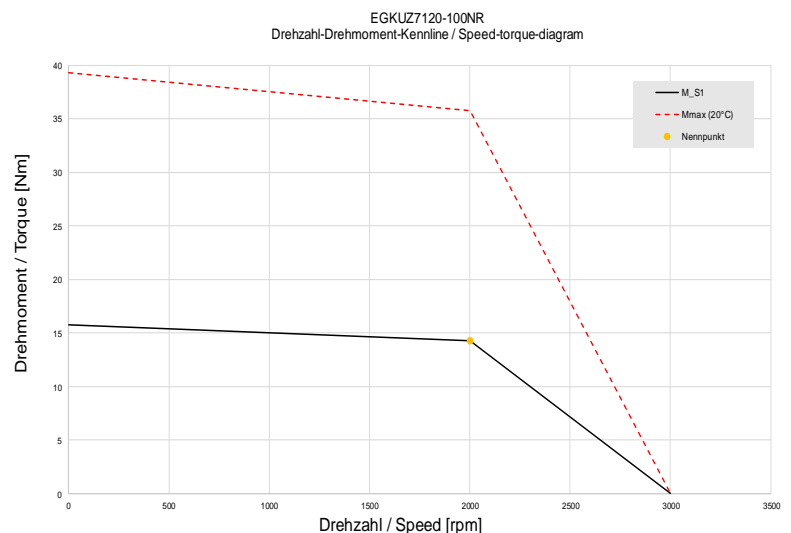
### EGKUZ120-100NR




### EGKUZ120-100NRB (mit Bremse / with brake)

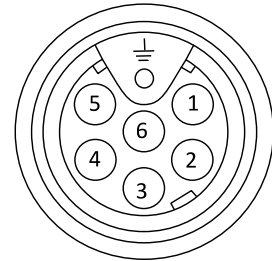


### Kennlinien / Diagrams



| PIN   | Funktion                                     |
|---|--|
| 1   | Motor U                                      |
| 2   | Motor V                                      |
| 3   | Motor W                                      |
| 4   | Bremse B+ (optional)<br>Breake B+ (optional) |
| 5   | Bremse B- (optional)<br>Breake B- (optional) |
| 6   | NC   |
|  | Motor PE                                     |

M17



| PIN | Resolver | Encoder |
|-----|----------|---------|
| 1   | Ref+     | DC +5V  |
| 2   | Ref-     | 0V      |
| 3   | Cos+     | A       |
| 4   | Cos-     | /A      |
| 5   | Sin+     | B       |
| 6   | Sin-     | /B      |
| 7   | KTY (+)  | KTY (+) |
| 8   | KTY (-)  | KTY (-) |
| 9   |          | U       |
| 10  |          | /U      |
| 11  |          | V       |
| 12  |          | /V      |
| 13  |          | NC      |
| 14  |          | Z       |
| 15  |          | /Z      |
| 16  |          | W       |
| 17  |          | /W      |

M17

