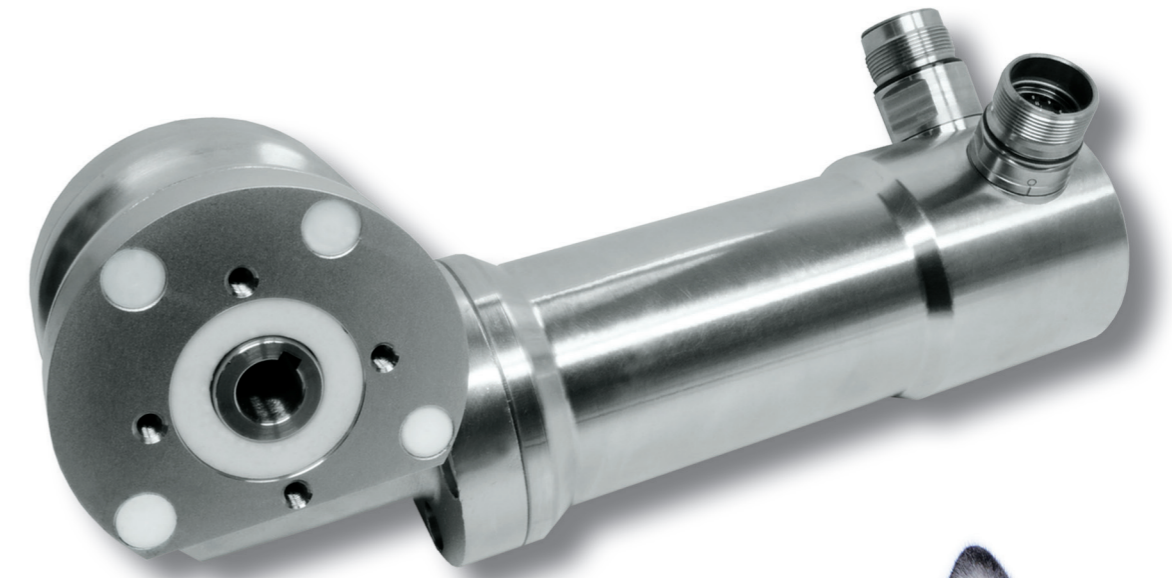


Dynamic. Precise. Powerful.

Silver Line[®] Stainless Steel Drives



GROSCHOPP 
Drives & More

Greetsallee 49
41749 Viersen
Phone: +49 (0) 21 62/3 74-0
Fax: +49 (0) 21 62/3 74-108
E-Mail: info@groschopp.de
www.groschopp.de

Talk to us.

GROSCHOPP 

GROSCHOPP 



Silver Line® Stainless Steel Drives

The drive unit Silver Line® is a progressive development of the proven and tested Black Panther® and Vario Line, the difference being that it is made entirely of stainless steel. These stainless steel drives comprise electronically-commutated servo-motors, reducer gears and, optionally, integrated servo-controllers. The round housing, made of precision-machined V4A stainless steel, offers significant advantages in respect of corrosion resistance compared with conventional materials.

Screw connections and holes have disappeared below the housing surface. Silver Line® has been designed especially for high water protection, thus achieving by default protection class IP 65, optionally up to IP 69K. For this reason the drive unit is optimally suited for the industry sectors Foodstuffs, Pharmaceuticals, Chemistry or Medical Science.

General	Motor	Servo-controller
<ul style="list-style-type: none"> Protection Class IP 65 / IP 67 / IP 69K Stainless Steel: V4A 1.4401/ 04 Applicable in extreme environments No accumulation of suspended matter due to hygiene-conform design 	<ul style="list-style-type: none"> Brushless AC-servo-motor Extreme high power density High positioning accuracy Compact-built Resolver, optical encoder or VOLKSSERVO® - encoder 	<ul style="list-style-type: none"> Discrete or in motor-housing integrated controller electronics Revolution-, torque- or position-controller Power supply 24 - 60 V DC or 230 V / 400 V AC Interface: analogue/digital IO and CAN-Bus (CANopen protocol) Optionally: RS232, Ethercat, ModBus, Profibus
Reducer gear	De-centralised drives:	
<ul style="list-style-type: none"> Worm-gear VES 31 and VES 40 Modulare structure Low noise Lubricant approved for use in foodstuffs industry Inserting shaft optional 	<ul style="list-style-type: none"> Axially integrated solution Separate Bus-plug-make Separate 9 to 30 Volt DC control-voltage supply Power voltage supply 24 – 60 Volt DC Output 50 to 200 Watts Integrated MPU 	



Customized version
with integrated electronic

Strong Performance without Edges and Corners

Type	Rated power in Watts	Reducer-gear combination	Drive-torque Nm	Overall-length mm
ESK 48-60 NR	120	VES 31	Md max 9 Nm	243,5
ESK 65-60 NR	350	VES 31	Md max 9 Nm	250
ESK 65-60 NR	350	VES 40	Md max 45 Nm	298,5
ESK 80-80 NR	580	VES 40	Md max 45 Nm	321,5
ESK 65-60 NI	up to 200	VES 31	Md max 9 Nm	310

